

# Adeka Ultra Seal A-30 in PZ piles

[www.adeka.com](http://www.adeka.com)

800.999.3959

1. Clean - interlocks **MUST** be clean. Use wire brush to remove any loose rust or debris.
2. Make sure the piles are level. If you are going to treat just a portion of the pile, use a small bead of sealant, urethane foam or something to dam the portion. Use a dam every few feet if the pile has a curvature to it. **The piles must remain level** during the curing process. Sequence the application so the A-30 in treated piles will have cured before moving.
3. Measuring and Mixing - The A-30 is a two component material. **IMPORTANT** measure the 15:1 ratio carefully and mix thoroughly. The material may not cure due to incomplete mixing. Don't mix more than you can use. 2 quarts of resin will require 4.25 ounces of hardener. Or another example 7.5 quarts of resin will require 0.5 quarts of hardener. **POT LIFE is approximately 2 hours!**



4. Protection - Keep interlocks dry before driving. Piles may be stored for several weeks if kept dry.

5. Driving - **Piles must be driven to their final depth within 2 hours of hitting ground water or any water.**

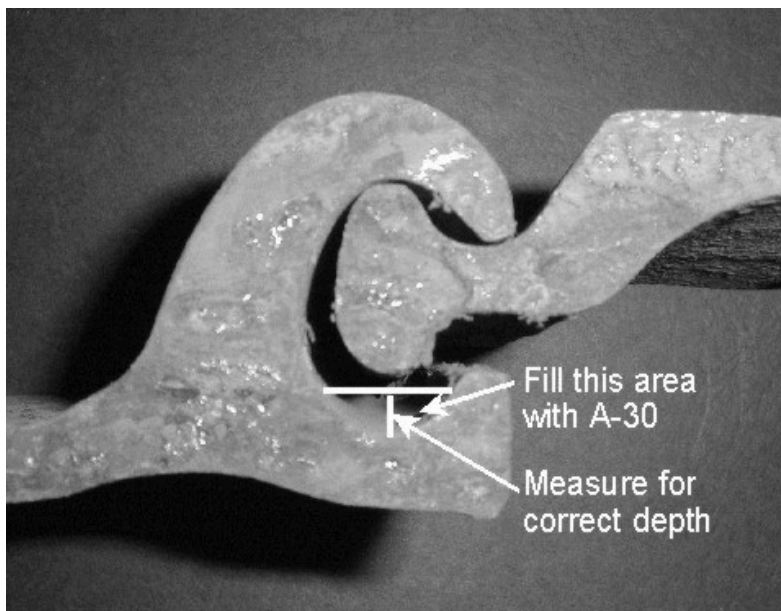
6. Brushing with a little soapy water just prior to driving may help the interlocks slide together easier.

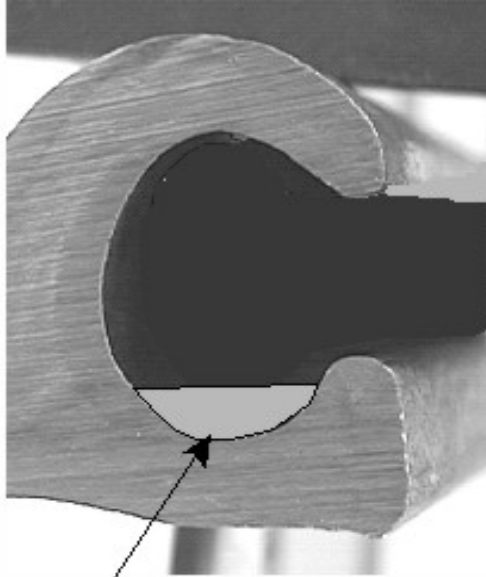
**Materials on hand list:**

- \* Plastic buckets (see photo) approximately 4 gallon size for mixing -
- \* Measuring bucket marked at 7.5 quarts (1/2 of the resin - or appropriate measure for quantity needed).
- \* Measuring container marked at 0.5 quarts (1/2 of the hardener - or appropriate measure for quantity needed.)
- \* Drill and mixing paddle
- \* Containers for pouring A-30 into interlock ( Coffee cans, plastic containers or dispensers work the best)
- \* Insulating foam, backer rod, sealant or similar to seal ends of piles (see photo for example) -
- \* Tool for checking depth of A-30 in the interlock (see photo)
- \* Disposable paint stirring sticks to scrape remaining resin into mixing container
- \* Suitable gloves and clothes (A-30 is difficult to remove from clothing)
- \* Carpenters level for checking level of pile (should be fairly long level)

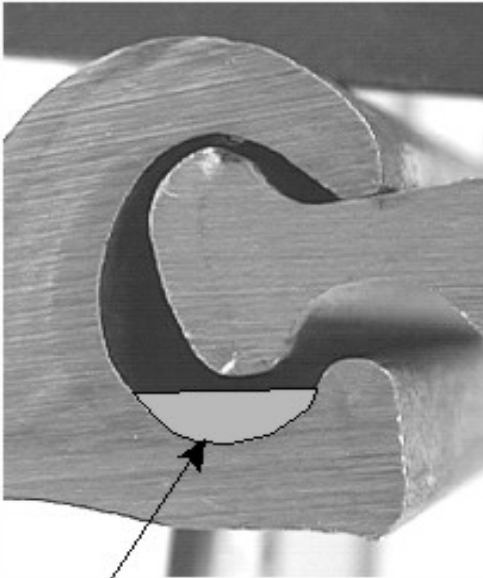
\* Apply in the socket as shown in the following photos. **IMPORTANT - Must have correct amount in the interlock. More is not always better! The most efficient amount in the side interlock of paired piles is about 1/8" .**

SEE NOTE PAGE 6





A-30



A-30

## ON SITE JOB PHOTOS



Place piles on parallel level  
H- Beams



Paired PZ piles



“Ball” of PZ piles - grind  
off any rough edges of  
the ball before driving.  
Rough edges could  
gouge A-30 from the  
socket

Piles leveled ready for cleaning  
and application of A-30



Socket of PZ piles





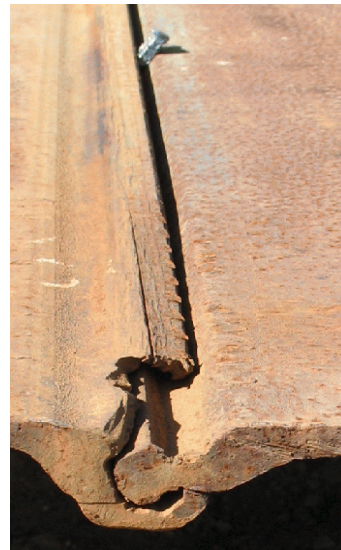
Cleaning socket with wire brush  
**IMPORTANT** - socket must be  
clean, dry, free from oils and any  
loose rust or debris



Remove any loose debris by  
compressed air



Plug ends with urethane  
foam in spray can, backer  
rod, or bead of caulk



Open paired center interlock by  
wedging 1/4" spacer in the  
interlock. This is best done while  
placing the pile on the H-Beam.  
The crane or loader can raise the  
center to accept the wedge.



Prepare a small tool for measuring the correct depth of the A-30. A small allen wrench marked with a chisel and paint at the 1/8" mark works the best. This is easy to slip into the interlock and easy to see the depth of the A-30. Don't apply too much A-30. The maximum amount should be about 1/8" Keep checking the level. A-30 will flow to the lowest point.

**IMPORTANT** - The pile must remain level until the A-30 is cured (approximately 8 hours).



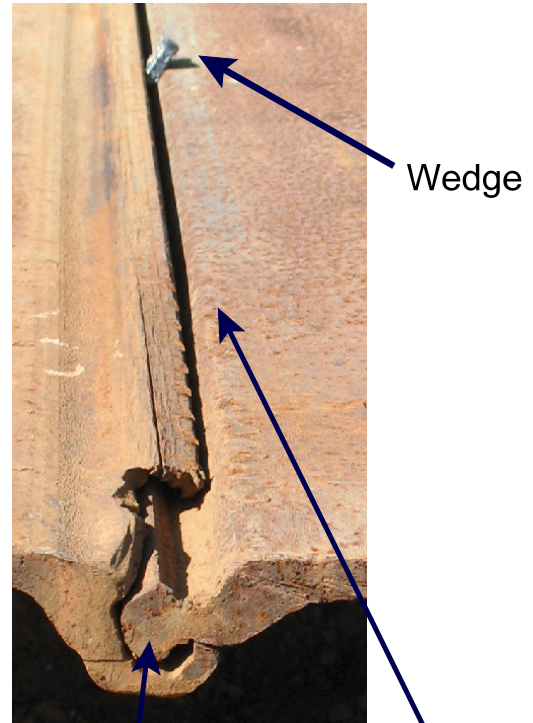
A small plastic "squeeze" bottle works best for applying A-30 to the outer interlock.

**IMPORTANT** - Measuring and mixing is **CRITICAL**. The ratio is 1 part of hardener to 15 parts of resin. For example - 2 quarts (68 oz) will require 4.2 oz of hardener. Mix thoroughly! Don't mix more than can be applied within 2 hours.

Field conditions indicate 1/16" to 1/8" is the best thickness for most effective sealing and driving conditions. Pile must be level. If pile is not level from end to end, place small P-201 dams at 5~10 foot intervals to help control thickness of A-30 bead.

Two (2) quarts of A-30 will treat approximately 100 - 110 ft of the outer interlock. The center interlock will require more.

Applying A-30 to the center interlock.



Plug end with urethane foam in a can

Fill this area with A-30. A-30 will migrate into the bottom of the socket.

One (1) gallon of A-30 will treat approximately 100 feet when the center interlock is filled as shown.

SUMMARY - One (1) gallon of A-30 will treat approximately 100 feet of center interlock.

One half ( $\frac{1}{2}$ ) gallon of A-30 will treat approximately 100 feet of outer interlock.

**1.5 gallons of A-30 will treat one hundred (100) feet of paired sheet pile (100 feet of center and 100 feet of outer socket. Or an average of 130~140 feet of interlock per gallon when considering center and outer interlock together.**

This is an estimate and should be used as a guide only.

A-30 is a non-returnable item. Order short and add to your order after actual amount is determined by field use.

Contact your local representative  
Or Call 800-999-3959  
[www.adeka.com](http://www.adeka.com)